



CI/SfB

(43)

Yq

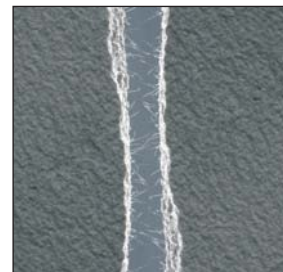
JULY 2016
(SUPERSEDES AUGUST 2015)
PRODUCT DATA SHEET

ARDEX F 5

White Universal Repair Mortar

Features

- Ideal for patch work and repairs to walls and ceilings
- Added performance due to MICROTEC Fibre Reinforcement
- Apply paints and other finishes the next day
- Can be used in areas subject to damp or at risk from water ingress
- Extended working time of 30 minutes
- Apply from feather edge to 50mm
- Slump free and easy to apply
- Internal and external use
- Brilliant White



What is the Rapidry Plus Formula?

It is the ability to totally bind the water used for mixing within the mortar, ensuring rapid drying and hardening properties



Reg No. FM 01207

EMS 565427

OHS 628374

ARDEX UK LIMITED
Homefield Road, Haverhill, Suffolk CB9 8QP UK.
Telephone: +44 (0)1440 714939
Fax: +44 (0)1440 716640
Email: technical_admin@ardex.co.uk
ARDEX online: www.ardex.co.uk

ARDEX F 5

White Universal Repair Mortar

DESCRIPTION

ARDEX F 5 is a brilliant white, cementitious, MICROTEC Fibre Reinforced Repair Mortar.

USE

For use in internal and external locations. Ideal for edge repairs, filling cavities, cracks, gaps and holes. ARDEX F 5 can be used for patch work and repairs on walls and ceilings, as well as smoothing internal walls and ceilings prior to the application of paints, renders, mineral render, silicone, varnish and rendering techniques. Can also be used on external facades and shop fronts.

SUBSTRATE PREPARATION

Priming is not normally required. Surfaces should be sound, dry, clean and free from dust, grease and other barriers to adhesion. The product will adhere directly to absorbent construction boards, cement/sand render or gypsum based plasters and does not require priming, a scratch coat is recommended. Dispersion based paints, and dispersion based mineral renders must be dry and able to take the expected load.

Polyurethane or varnish coatings, as well as loose renders, wallpaper and weakly adhered paints should be fully removed.

MIXING

Approximately 12.5 litres of water are needed to mix 25kg of ARDEX F 5 Powder. Approximately 2.5 litres of water are needed to mix 5kg of ARDEX F 5 Powder.

Gradually add 2 parts by volume of powder to 1 part by volume of clean water while stirring, and thoroughly mix until a lump-free consistency is achieved. The use of a drill and appropriate mixing paddle, suitable for the volume to be mixed, is recommended.

Mixing by hand is possible for small quantities. Allow the product to stand for approximately 2-3 minutes to allow all of the high performance additives to fully dissolve and wet out, before remixing the product to a smooth creamy consistency.

The mixed product is easy to apply with a working time of approximately 30 minutes.

APPLICATION

Apply with a trowel, blade or filling knife. Holes should be filled gradually from the edges to help avoid any air bubbles. For maximum performance it is recommended that you apply ARDEX F 5 at approximately 20°C. The product has an open time of approximately 30 minutes and can be applied immediately at any required thickness.

Approximately 40 minutes after application proceed with subsequent smoothing if required. Do not sponge finish ARDEX F 5.

The open time, hardening time and time for subsequent treatments, depends on the layer thickness applied and temperature. Higher temperatures shorten, and lower temperatures prolong the open time.

It is also possible to mix ARDEX F 5 with ARDEX FINE AGGREGATE for filling of minor cracks and rough substrates. The mix ratio is 1 part powder to 0.3 parts sand.

Do not add more water than stated in the mixing instructions. A trial application is recommended. ARDEX F 5 should be applied at temperatures above 5°C.

VERY LARGE CRACK REPAIRS:

ARDEX F 5 is for non-structural repairs. Apply a suitable bed thickness of ARDEX F 5 for the situation involved and smooth with a steel float or blade. Apply a subsequent application of ARDEX F 5 with a suitable notched trowel (wet in wet) and apply ARDEX BU-R reinforcement mesh and once again smooth with the edge of a steel float or blade, encapsulating the reinforcement mesh. After approximately 40 minutes smooth over to remove any imperfections.

DRYING TIMES

A 10 mm application of ARDEX F 5 will be ready to receive subsequent finishes, such as paint or rendering systems, in as little as 24 hours. For thicknesses above 10 mm the drying time will be 2-3 days.

NOTE: For patch repairs observe the porosity and alkalinity of the substrate.

ARDEX F 5 layers are water vapour permeable. Follow the instructions of the paint and render suppliers.

The water vapour transmission rate for ARDEX F 5 is approx. 60µ. A conventional cement/sand mortar is approx. 25µ.

ARDEX F 5 can be used in areas of high humidity, such as swimming pool areas. For example, areas of walls and ceilings where ceramic tiling is not present.

COVERAGE

ARDEX F 5 25kg Bag
Approximately: 27m² @ 1mm.
Approximately: 9m² @ 3mm.

ARDEX F 5 5kg Bag
Approximately: 5.5m² @ 1mm.
Approximately: 1.8m² @ 3mm.

PACKAGING

ARDEX F 5 is packaged in paper sacks with a polyethylene lining - net weights 25kg & 5kg.

STORAGE AND SHELF LIFE

This product must be stored in its original packaging, clear of the ground in cool, dry conditions and protected from excessive temperatures. If stored correctly, the shelf life of this product is 12 months. Ensure part-used bags are resealed.

TECHNICAL DATA

According to ARDEX quality standards:

Mixing ratio:	approx. 12.5 ltr water - 25 kg powder is equivalent to approx. 1 part water: 2 parts powder
Bulk density:	approx. 1.0 kg/ltr
Fresh mortar weight:	approx. 1.4 kg/ltr
Material requirement:	approx. 0.9 kg of powder per m ² /mm
Working time:	approx. 30 minutes

COMPRESSIVE STRENGTH

after 7 days:	approx. 7 N/mm ²
after 28 days:	approx. 12 N/mm ²


TENSILE BENDING STRENGTH

after 7 days:	approx. 3.0 N/mm ²
after 28 days:	approx. 5.0 N/mm ²
pH value:	approx. 11

NOTE: The information supplied in our literature or given by our employees is based upon extensive experience and, together with that supplied by our agents or distributors, is given in good faith in order to help you. Our Company policy is one of continuous Research and Development; we therefore reserve the right to update this information at any time without prior notice. We also guarantee the consistent high quality of our products; however, as we have no control over site conditions or the execution of the work, we accept no liability for any loss or damage which may arise as a result thereof.

Country specific recommendations, depending on local standards, codes of practice, building regulations or industry guidelines, may affect specific installation recommendations.

TECHNICAL ADVICE HELPLINE
01440 714939
ARDEX online: www.ardex.co.uk

	
432	
ARDEX UK Ltd Homefield Road Haverhill Suffolk CB9 8QP United Kingdom	
15 56149 (25kg)/56159 (5kg)	
EN 998-1:2010-12	
ARDEX F 5 General purpose mortar (GP) for external use EN 998-1: GP-CS IV-W2	
Reaction to fire:	F
Water absorption:	W2
Water vapour diffusion:	≤ 70
Adhesion:	≥ 1.0 N/mm ² , fracture pattern B
Durability of all mortars except DC:	Evaluation based on provisions valid in the intended place of use of the mortar
Dangerous substances:	See MSDS